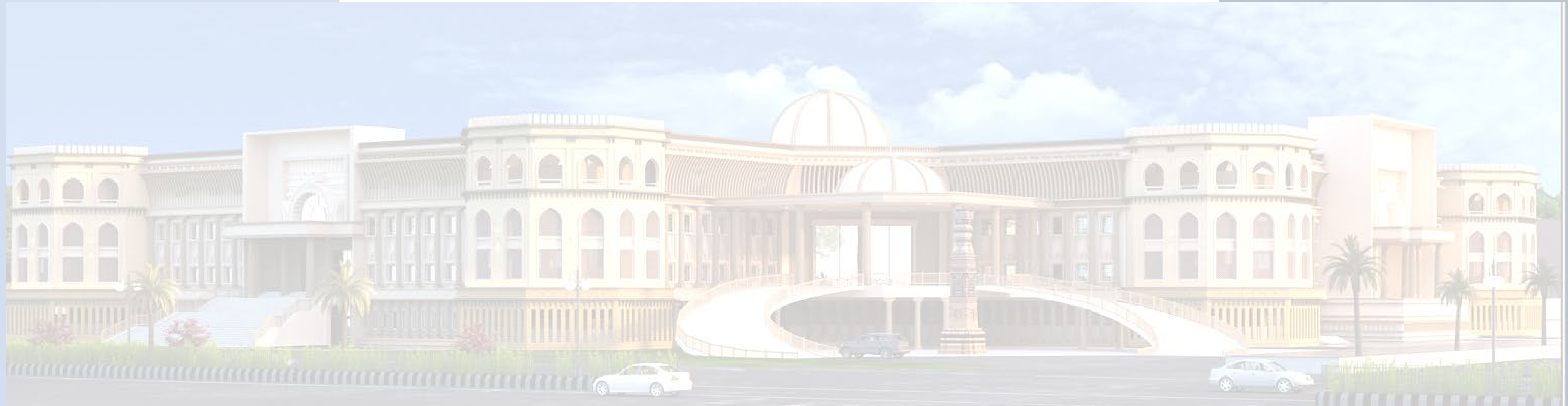


PROPOSED NEW COLLECTOR OFFICE BUILDING IN THE PREMISES OF LABOUR COLONY, CHATTRAPATI SAMBHAJI NAGAR (AURANGABAD).



OFFICE OF THE DY. CHIEF ARCHITECT AURANGABAD.

SMT. M. S. KUMBHARE
DY. CHIEF ARCHITECT

Project Management Consultant (PMC)



MHS
DESIGN BUREAU
LLP



MOHAMMAD HARES SIDDIQUI
PRINCIPAL ARCHITECT
Mob:- 9823264787

ISO 9001-2015 | ISO 14001

5&6, Gr. Floor, Samreen Palace, Dr Rafiq Zakaria Marg,
Delhi gate, Aurangabad. 431001 M.S. India
Contact: +91(240)2324787, +91(240)2364787
Email: info@mhsdesignbureau.com
Web: www.mhsdesignbureau.com
A2-802, B.E.C. Kondhwa Pune 411048 M.S. India

PROJECT BRIEF

- A NEW COLLECTOR OFFICE BUILDING FOR ALLIED AND SUBORDINATE OFFICES UNDER THE COLLECTOR OFFICE.
- INCORPORATING PLANNED SPACES FOR THE PUBLIC, GOVERNMENT EMPLOYEES AND AUTHORITIES.
- PROVISION FOR HOUSING A CABINET MEETING WITH INCLUSION OF DESIGN AND INFRASTRUCTURE TO ACCOMMODATE GOVERNMENT DIGNITARIES FROM THE STATE AND THE CENTRE.
- ADEQUATE PARKING FACILITY AND DEMARCATION FOR FUTURE PROPOSAL OF CENTRAL ADMINISTRATIVE BUILDING.
- TO HARMONIZE AND AMALGAMATE THE HISTORICAL ARCHITECTURAL STYLES OCCURRING IN THE REGION`

PROJECT DESCRIPTION

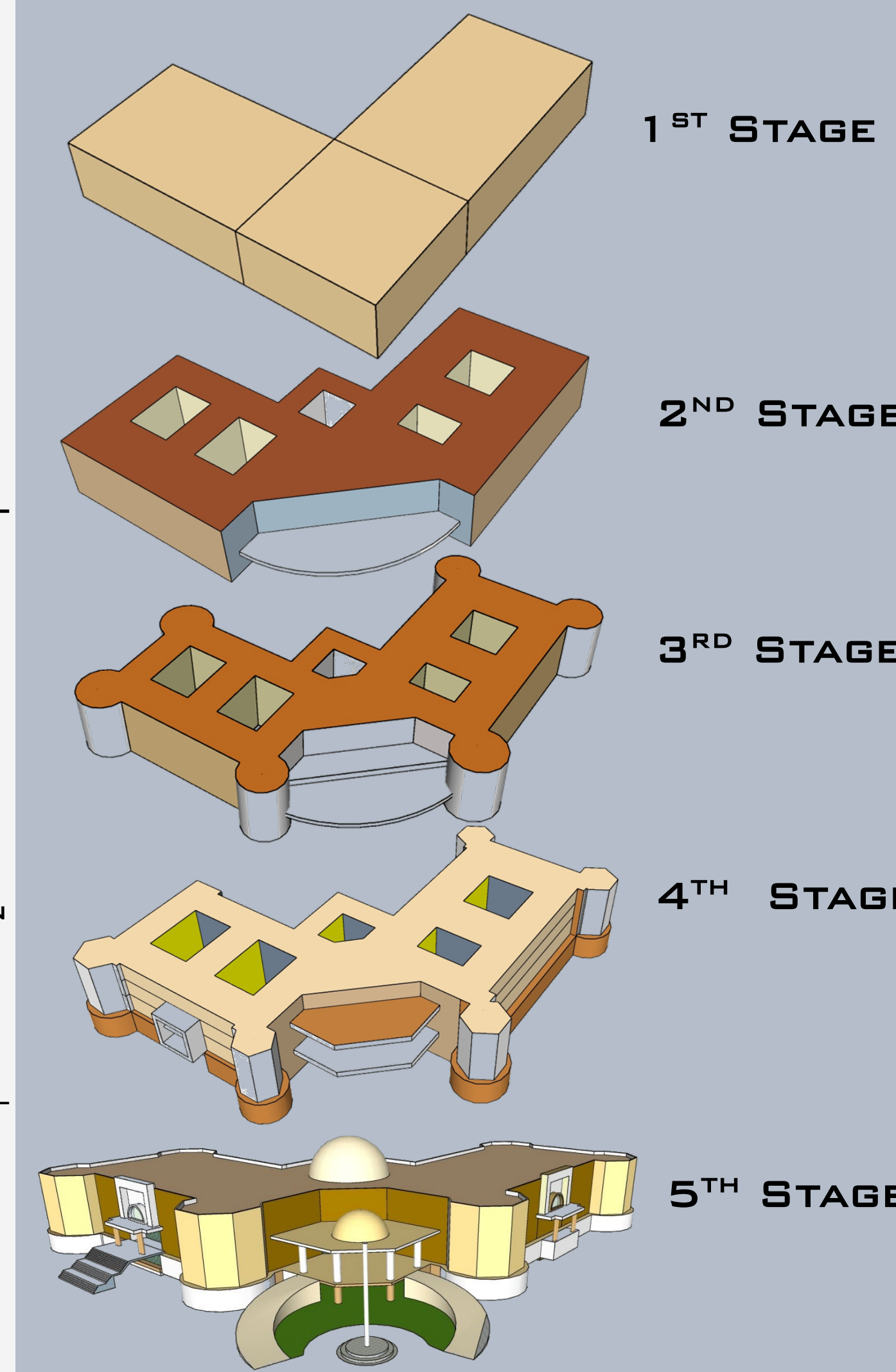
- LABOUR COLONY , CHATTRAPATI SAMBHAJI NAGAR, (AURANGABAD)
- PLOT AREA = 14.77 ACRES
- PROJECT CONFIGURATION
 - COLLECTOR OFFICE
 - BASEMENT
 - GROUND (PART STILT FLOOR)
 - FIRST FLOOR
 - SECOND FLOOR
 - THIRD FLOOR
 - PARKING FACILITY
 - AS PER UDCPR NORMS

CONCEPT

- TO CREATE SUSTAINABLE AND FUNCTIONALLY VIABLE WORKSPACES, INTERIOR ZONES AND OUTDOOR AREAS THAT SPATIALLY INTERACT WITHOUT HINDRANCE IN THE CIRCULATION AND ADHERING TO THE REQUIREMENTS OF END USERS.
- THE FUNDAMENTAL PURPOSE OF THE HOLISTIC, HORIZONTAL EXPANSION AND CENTRALIZED PLANNING IS TO ENHANCE THE ERGONOMIC RESPONSE AND TO ENSURE THE LAND USE REMAIN UNAFFECTED BY ENCROACHMENTS
- ADDING VALUE TO THE STRENGTH OF THE CITY AS THE TOURISM CAPITAL OF MAHARASHTRA WITH UNESCO WORLD HERITAGE SITES, BLENDING SELECTIVE FEATURES THAT REPRESENT BUDDHIST, HINDU TEMPLE, ISLAMIC AND VERNACULAR ARCHITECTURAL STYLES TO CREATE HOMOGENIZED BUILDING ELEVATION

- PLAN :**
ZONING ACCORDING TO FUNCTIONAL REQUIREMENT DISTINCT CIRCULATION SPACES FOR THE PUBLIC GOVERNMENT OFFICIALS AND THE DIGNITARIES IN ORDER TO MAINTAIN SECURITY
- DESIGN STRATEGIES**
- TWO WINGS WITH A CENTRAL CIRCULATORY CORE TO INTERCONNECT BOTH THE WINGS OF DIFFERENT UTILITIES
 - ENSURING SAFETY MEASURES BY FOLLOWING STANDARDS WITH RESPECT TO EXIT POINTS AND TRAVEL DISTANCES
 - REDUCING HEAT GAIN BY USING
 - CAVITY WALL
 - BUILDING ENVELOPE
 - BRISE SOLIEL- SHADING DEVICES
 - SUN BREAKERS
 - HIGH CEILING LEVEL IN INTERIORS AND DOUBLE HEIGHT LOBBIES TOWARDS NORTH
 - LIGHT EXTERIORS FOR DEFLECTION OF RADIATION
 - COURTYARDS, ATRIUMS & INNER CHOWKS FOR CROSS VENTILATION & CONTROLLED ENVIRONMENT
 - PERPENDICULAR AND HORIZONTAL BARRIERS IN LANDSCAPING FOR WIND FLOW AND SHADING
 - MAXIMUM FRONTAGE ON NORTH - SOUTH.
 - TO KEEP MINIMUM 30% OF THE PLOT AREA OPEN FOR GROUND WATER TABLE RECHARGE

FORM DEVELOPMENT



- PRELIMINARY PLANNING**
- SITE TOPOGRAPHY AND SHAPE
 - TWO SEPARATE WINGS WITH CENTRAL VERTICAL CIRCULATION CORE
 - SYMMETRY AT AN ANGLE OF 45DEGREE TO THE NORTH DIRECTION
- PRELIMINARY PLANNING**
- DECIDING ENTRY AND EXIT POINTS
 - ADDING VOIDS TO MAKE THE FORM LESS RIGID, PUNCTURES ACT AS CHOWKS AND SOURCE OF LIGHT TO THE INNER SPACES
- SECONDARY PLANNING**
- THE SOLID FORMAL VOLUME IS GIVEN AN ORGANIC CHARACTER WHICH RESULTS IN MOVEMENT OF EYE FROM ONE EDGE TO OTHER BY INTRODUCING CIRCULAR ELEMENTS AT THE CORNERS
- SECONDARY PLANNING**
- FIXING SERVICE CORES AND DECIDING FENESTRATIONS AND OPENINGS ACCORDING TO THE CLIMATIC FACTORS
- TERTIARY PLANNING**
- THE ELEVATION AND FAÇADE IS DEVELOPED BY INCORPORATING DESIGN ELEMENTS AND PRINCIPLES SUCH AS HEIRARCHY, REPETITION, PROPORTION AND RHYTHM.

ABOUT CHATTRAPATI SAMBHAJI NAGAR (AURANGABAD)

GEOGRAPHICAL CO-ORDINATES

- LATITUDE = N 19° 53' 47"
- LONGITUDE = E 75° 23' 54"
- ALTITUDE = 663 M

TOPOGRAPHY

- NORTH = JATHWADA HILL RANGES
- SOUTH = SATARA HILLS
- ALTITUDE INCREASES TO THE NORTH

TEMPERATURE												
Winter												
Summer												
Monsoon												
Post monsoon												
Months	Jan.	Feb.	March	April	May	June	July	August	Sep.	Oct.	Nov.	Dec.
Maximum	29°C	30°C	35°C	38°C	39°C	32°C	26°C	27°C	30°C	30°C	27°C	27°C
Minimum	15°C	15°C	20°C	25°C	25°C	23°C	23°C	21°C	22°C	20°C	17°C	13°C

LOCATION MAP AND SITE ZONING



SPATIAL ARRANGEMENT

LEGEND

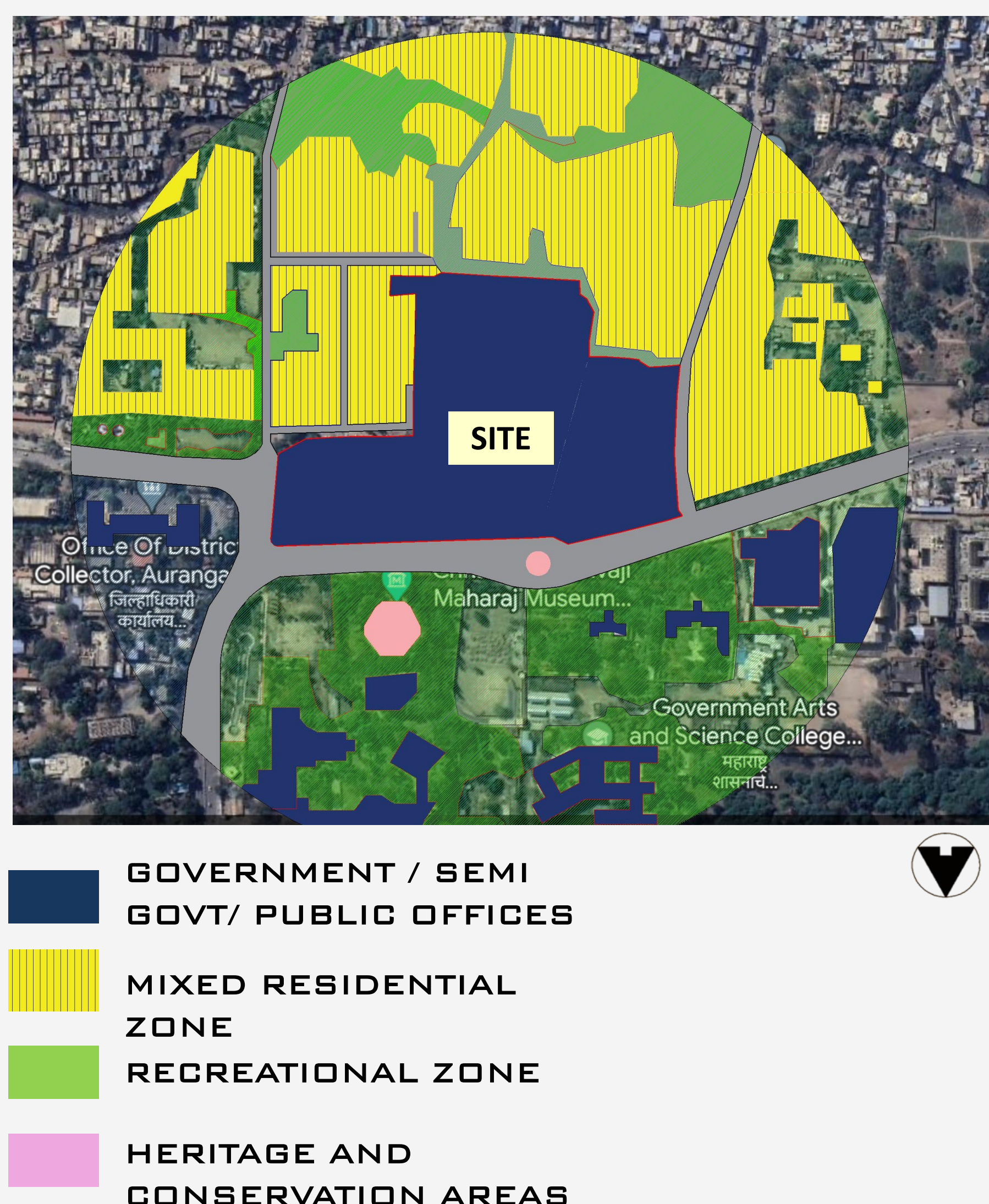
- OFFICE AREAS
- CIRCULATION AREA
- MEETING HALL
- LAVATORIES
- SERVICE AREAS
- SERVICE CORE
- ATRIUMS/ CHOWKS



SITE CONNECTIVITY AND SURROUNDINGS



LAND USE

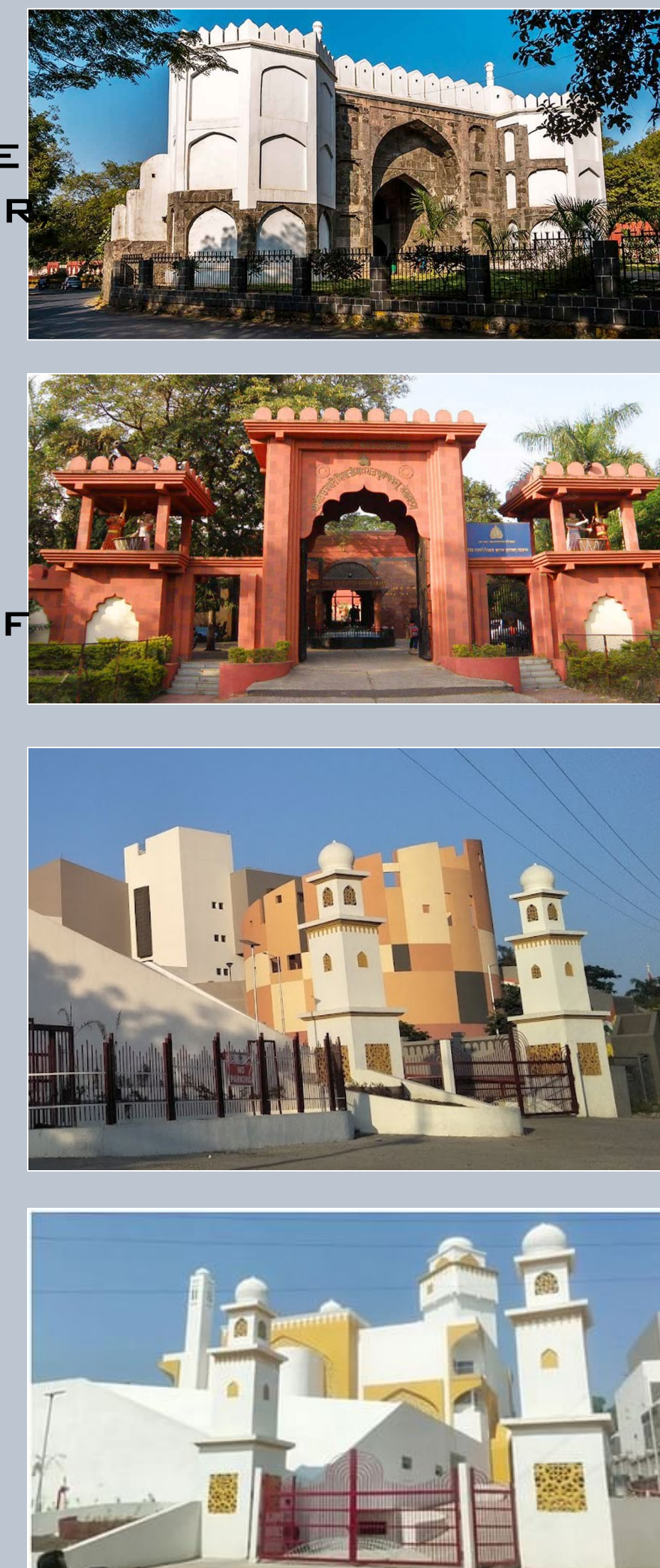


EXISTING SITE CONDITION



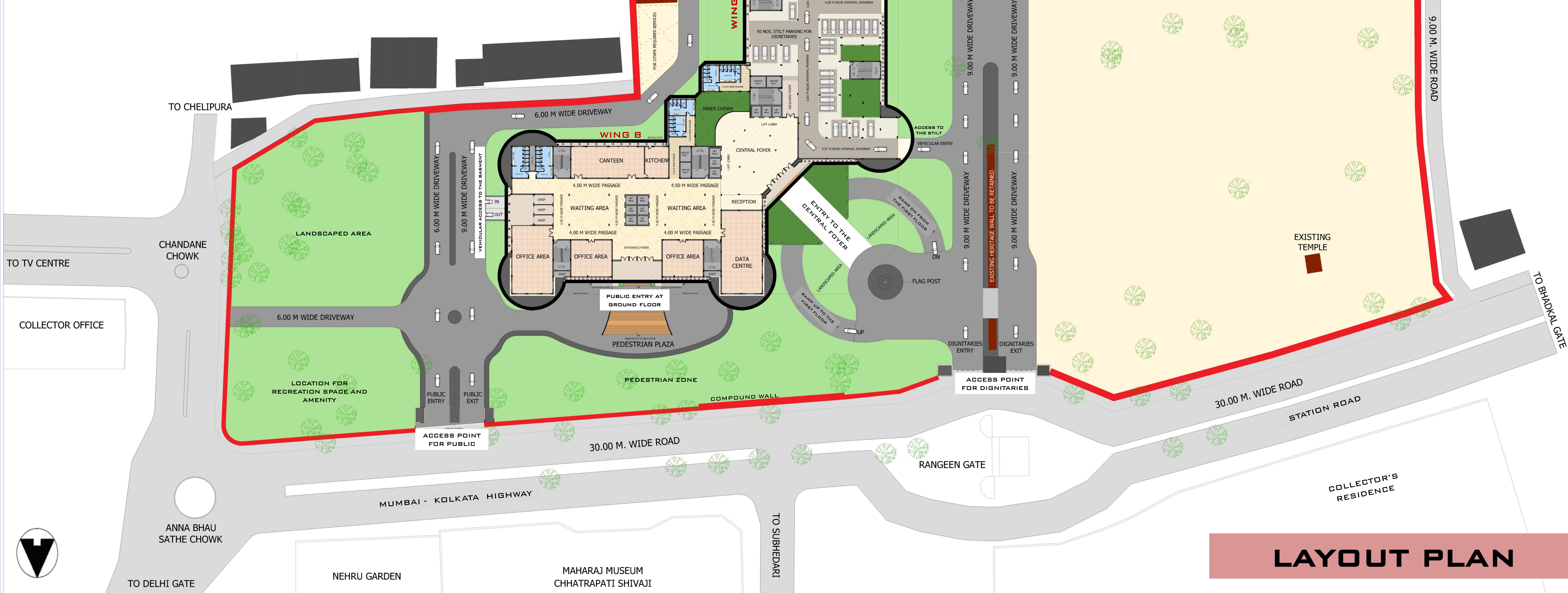
PROMINENT STRUCTURES IN THE PRECINCT

- THE RANGEEN DARWAZA**
HISTORICAL GATE OF AURANGABAD TOWN, CLOSE TO KILLE ARK WHICH WAS ONCE THE RESIDENCE OF THE LAST MUGHAL EMPEROR AURANGZEB.
- THE CHHATRAPATI SHIVAJI MUSEUM**
DEDICATED TO CHHATRAPATI SHIVAJI MAHARAJ, THE GREAT MARATHA RULER DISPLAYS WAR WEAPONS AND OTHER ANTIQUE ITEMS OF THE FORMER RULERS OF THE MARATHA EMPIRE.
- THE VANDE MATARAM SABHAGRUHA**
SYMBOL OF THE INDEPENDENCE CONSISTS OF AUDITORIUM, THEATRE, AMPHITHEATRE, ART GALLERY, PERMANENT EXHIBITION CENTER, SEMINAR HALL AND A PUBLIC PLAZA
- THE HAJ HOUSE**
THIS IS THE THIRD HAJ HOUSE IN THE STATE WHERE ABOUT 450 HAJ PILGRIMS FROM ACROSS THE REGION CAN STAY



PROPOSED NEW COLLECTOR OFFICE BUILDING, IN THE PREMISES OF LABOUR COLONY, CHATTRAPATI SAMBHAJI NAGAR (AURANGABAD)

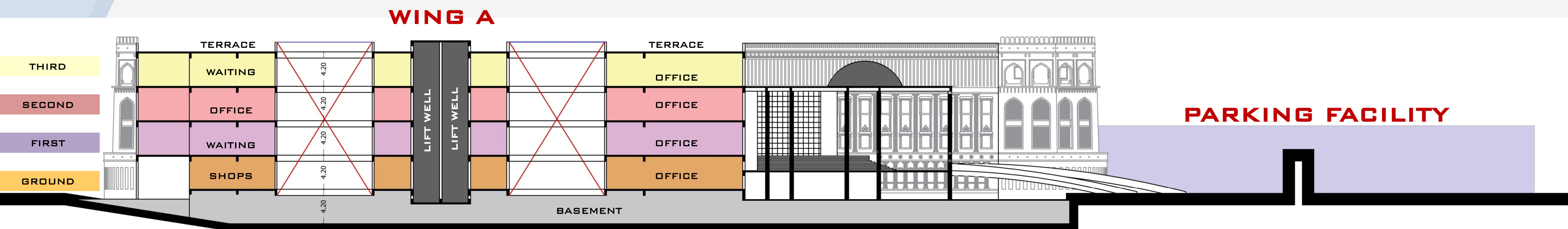
CONFIGURATION		
CONFIGURATION	WING A	WING B
BASEMENT	PARKING FOR VEHICLES, STORE , RECORD, SURVEILLANCE ROOM	
GROUND FLOOR / STILT FLOOR	*DIGNITARIES PARKING FOR 50 CARS *OFFICER'S/ DIGNITARIES ENTRY FOR THE D.P.D.C. & CABINET MEETING HALL *CAR GARAGE *DRIVERS ROOM *VISITORS REST ROOM	*SERVICE CENTRE *DATA CENTRE *OFFICE AREAS *SHOPS *CANTEN *STAFF & PUBLIC REST ROOMS
FIRST FLOOR	*COLLECTOR OFFICE *MEETING HALL CAPACITY : 45 PEOPLE *D.P.D.C. HALL CAPACITY : 200 PEOPLE *V.I.P. LOUNGE *WAITING AREAS FOR DIGNITARIES *R.D.C.'S OFFICE *STAFF AND VISITORS REST ROOMS *STORE *PANTRY *SERVER ROOM	*NIYOJAN SHAKHA *VIDHI SHAKHA *GRUHA SHAKHA *MAHSUL SHAKHA *NAGARPALIKA SHAKHA *PUBLIC WAITING AREA *STAFF & PUBLIC REST ROOMS
SECOND FLOOR	*C.M.'S OFFICE *CABINET MEETING HALL CAPACITY :200 PEOPLE *DY. C.M.'S OFFICE *WAITING AREA FOR DIGNITARIES *STAFF AND VISTORS REST ROOMS *STORE *PANTRY *SERVER ROOM	*BHUSAMPADAN SHAKHA VISHESH BHUSAMPADAN/ *BHUSAMPADAN JA. PRA. SHAKHA/ *BHUSAMPADAN SAMANVAY SHAKHA *NIVADANUK SHAKHA *PURAVTHA SHAKA RAJYA SHISHTACHAR *ASTHAPANA *PUBLIC WAITING AREA *STAFF AND PUBLIC REST ROOMS
THIRD FLOOR	*C.S. CABINS WITH SUPPORTING STAFF CUBICLES - 20 NOS *STORE *PANTRY *SERVER ROOM	
	*SAMANYA PRASHASANA *GAUN KHANIJ SHAKHA *KARMANUK SHAKHA *RD HA YO *PUNARVASAN SHAKHA *PUBLIC REST ROOMS *JILHA SUCHANA VIDYAN KARYALAYA *D.I.T. MAHITI TANTRADNYAN SHAKHA *STAFF REST ROOMS *PUBLIC WAITING AREA	



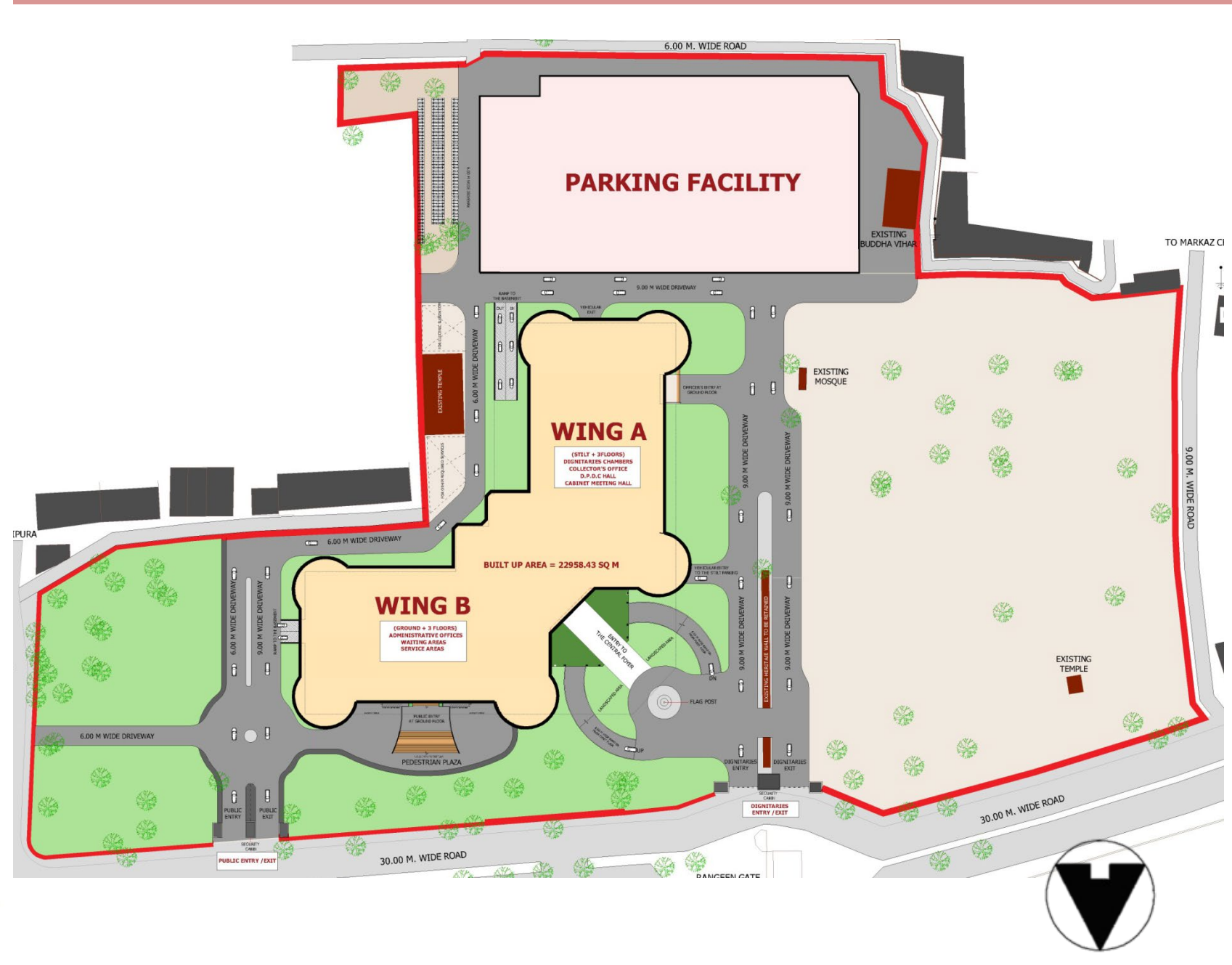
GROUND COVERAGE/ FOOT PRINT ON THE LAYOUT

- COLLECTOR OFFICE
- RECREATIONAL GROUND/ OPEN SPACES/ SOFT SCAPING AREA
- PARKING
- INTERNAL ROADS / PAVED PATHWAYS
- EXISTING RELIGIOUS STRUCTURES

SCHEMATIC SECTION



KEY PLAN



BUILT UP AREA SUMMARY

FLOORS	BUILT UP AREA
BASEMENT	9500.00 SQ M
GROUND FLOOR	4103.66 SQ M
FIRST FLOOR	6586.63 SQ M
SECOND FLOOR	5393.28 SQ M
THIRD FLOOR	6131.77 SQ M
PROPOSED BUILT UP AREA	31715.34 SQ M

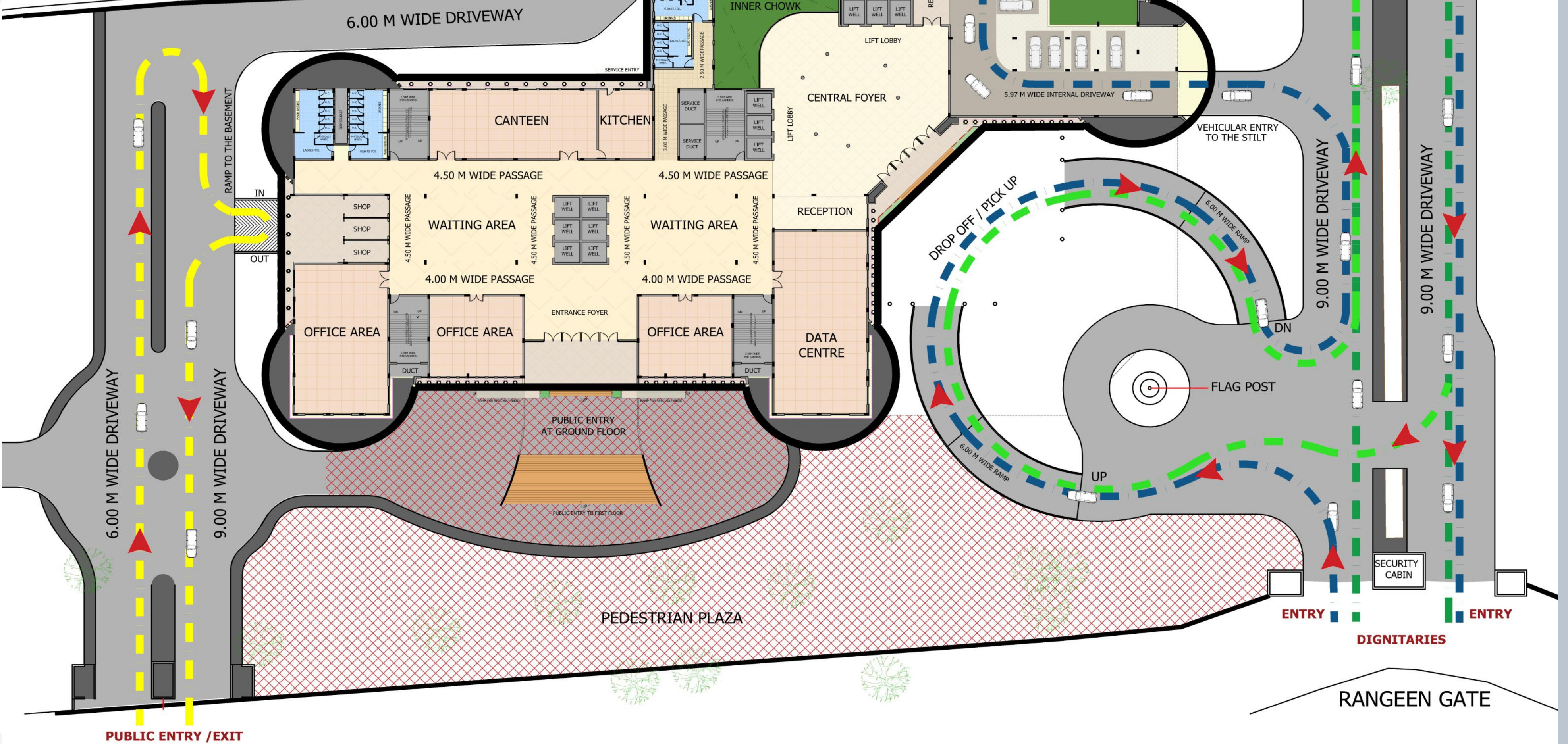


TRAFFIC CIRCULATION PLAN

LAYOUT PLAN

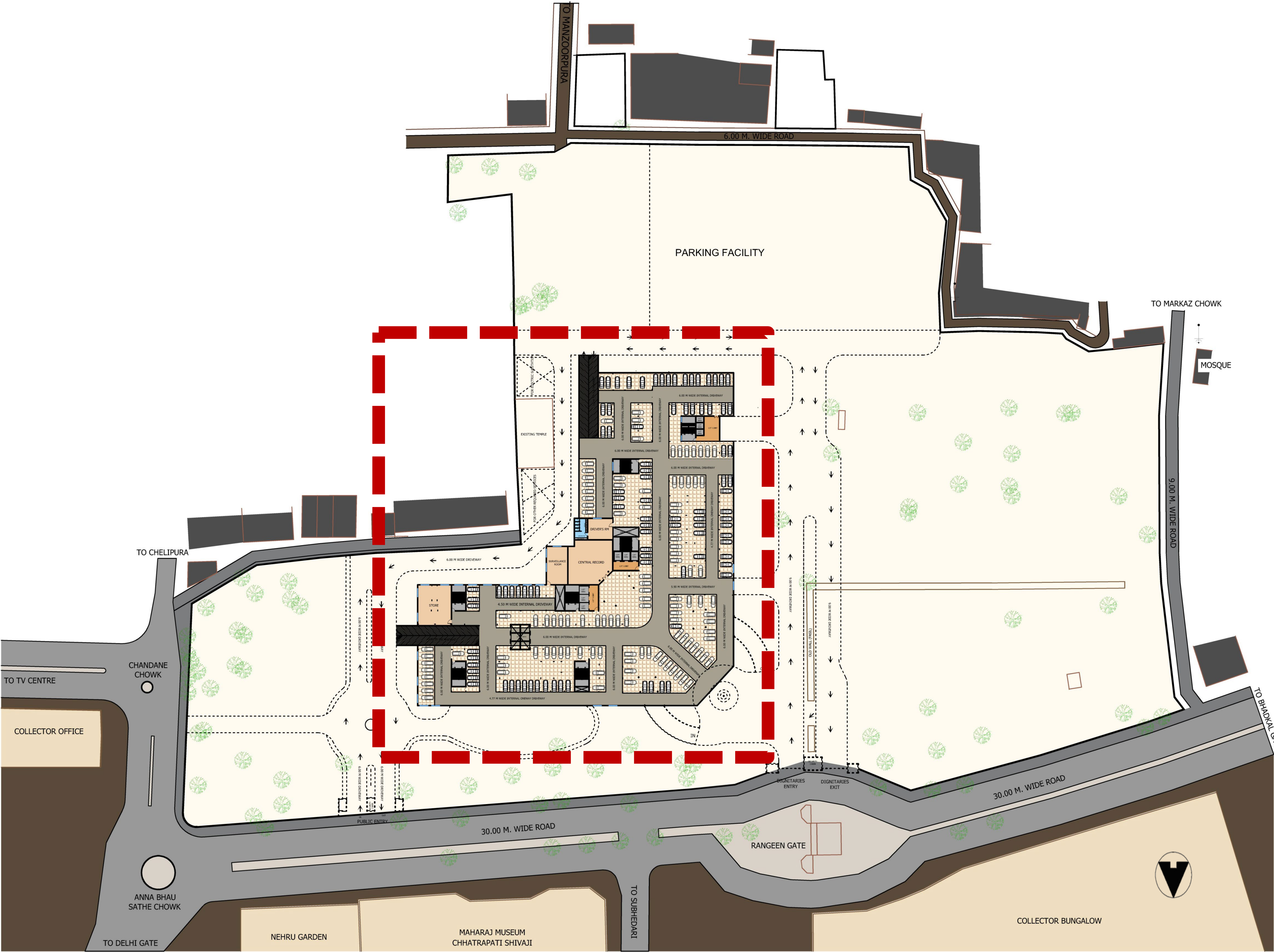
LEGEND

- DIGNITARIES DROP OFF - PICK UP ROUTE (TO STILT PARKING)
- DIGNITARIES DROP OFF - PICK UP ROUTE (TO BASMENT PARKING)
- PUBLIC DROP OFF - PICK UP ROUTE (TO BASMENT PARKING)
- PEDESTRIAN ZONE FOR PUBLIC



BASEMENT PLAN

PROPOSED BASMENT AREA = 9500 SQ M
PARKING CAPACITY = 250 FOUR WHEELERS



KEY PLAN



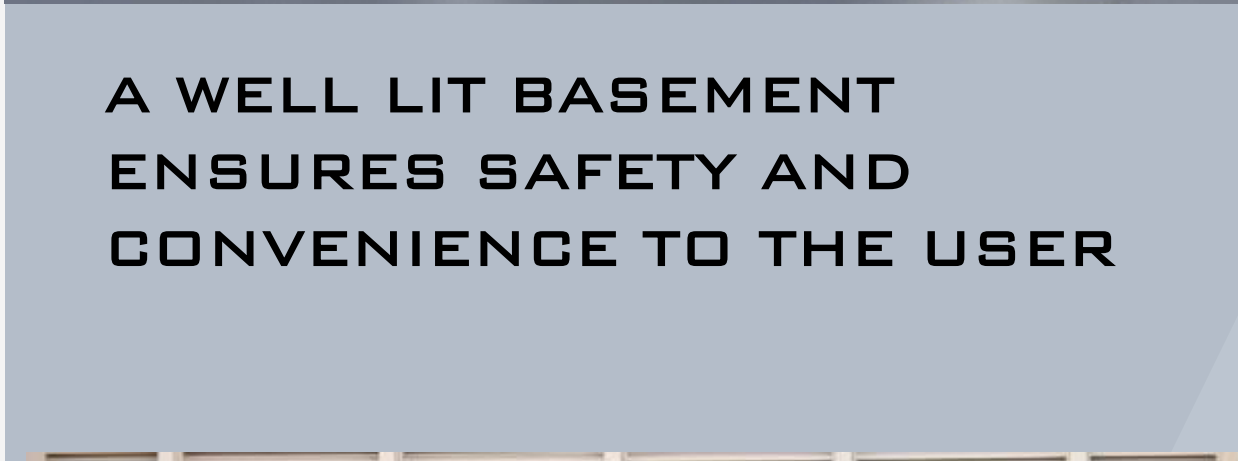
LEGEND

- DRIVEWAYS
- PARKING ZONES
- VITRIFIED TILES (STORE/ RECORD/ SURVEILLANCE ROOM, DRIVERS ROOM)
- LIFT LOBBIES
- LAVATORIES

LOOK-ALIKES FOR REFERENCE



BRIGHTLY PAINTED DIRECTIONAL ARROWS AND COLUMNS TO HELP DRIVERS NAVIGATE THE PARKING STRUCTURE MORE EASILY AND SAFELY.



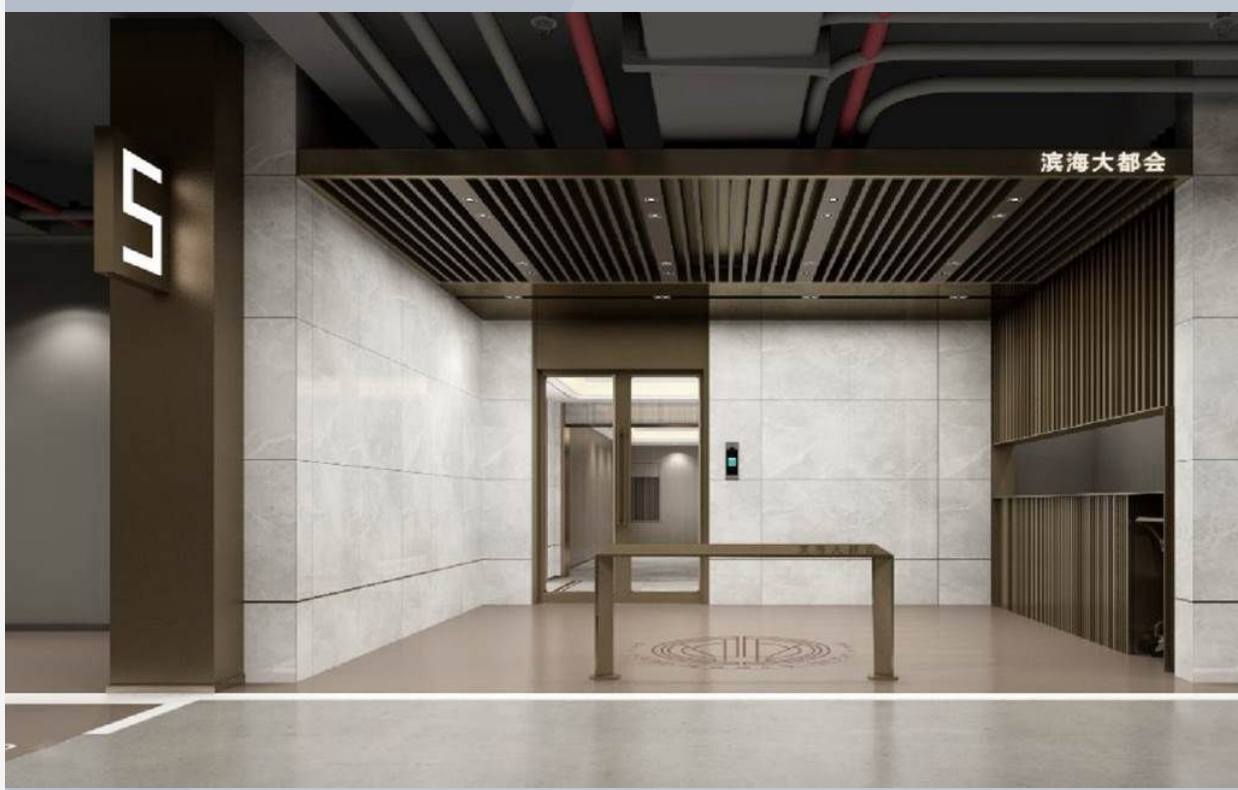
A WELL LIT BASEMENT ENSURES SAFETY AND CONVENIENCE TO THE USER



A WELL DEFINED ENTRY AND EXIT POINT TO THE BASEMENT KEEPS THE VEHICULAR MOVEMENT SMOOTHLY RUNNING



A CHECKPOST AT THE ENTRANCE OF THE BASEMENT FOR MONITORING THE CIRCULATION



THE LIFT LOBBIES TO THE BASEMENT WITH THE GATE NUMBERS

DESIGN CONSIDERATIONS

- TRAVEL DISTANCE OF 30 M MAINTAINED WHILE PROPOSING EXIT POINTS.
- TWO WAY DRIVEWAY AND TWO SEPARATE RAMPS TO AVOID CROWDING OF VEHICLES
- SEPARATE ENTRY AND EXIT POINT FOR PUBLIC AND DIGNITARIES VEHICLES TO LESSEN THE AMOUNT OF TIME TAKEN IN MANEUVERING
- CENTRAL LIFT CORE CARRYING PUBLIC FROM BASEMENT TO THE GROUND FLOOR CENTRAL FOYER
- OFFICE UTILITY SPACES AND STORES PROVIDED IN THE BASEMENT

GROUND FLOOR

BUILT UP AREA = 4103.66 SQ M

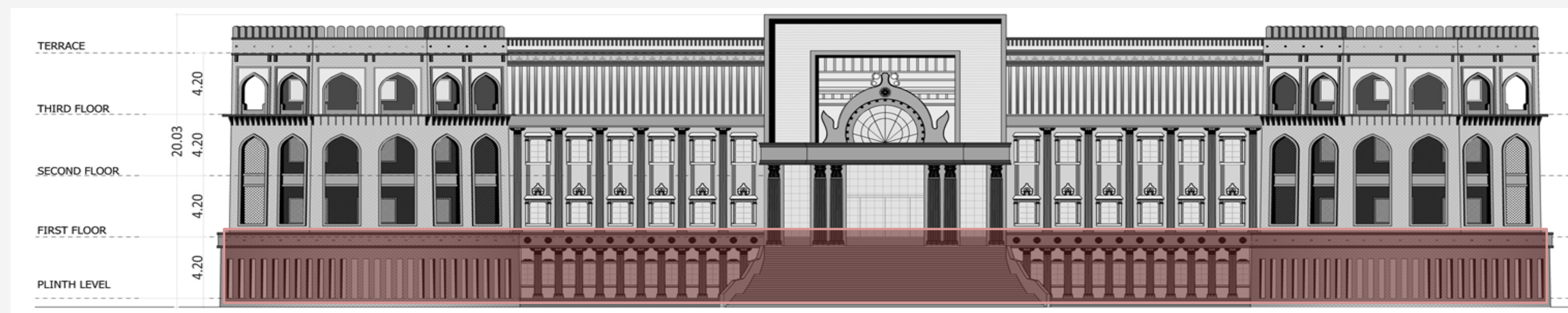
(EXCLUDING THE DUCTS, SHAFTS & ELEVATIONAL PROJECTIONS
AND STILT AREA)



3D PERSPECTIVE OF SITE PLAN

LEGEND

	OFFICES
	CORRIDORS AND PASSAGES
	STILT PARKING AREA
	SERVICE CORE
	LAVATORIES



FRONT ELEVATION

WING A

1. STILT PARKING (50 CARS)
2. GARAGE
3. VISITORS REST ROOMS
4. CENTRAL LIFT LOBBY
5. RECEPTION



WING B

6. SERVICE CENTRE
7. PUBLIC CORRESPONDENCE OFFICES
8. DATA CENTRE
9. SHOPS
10. REST ROOMS FOR PUBLIC
11. CANTEN
12. STAFF REST ROOMS



**PROPOSED NEW COLLECTOR OFFICE BUILDING, IN THE PREMISES OF
LABOUR COLONY, CHATTRAPATI SAMBHAJI NAGAR (AURANGABAD)**

4

SMT. M. S. KUMBHARE
DY. CHIEF ARCHITECT

**OFFICE OF THE DY. CHIEF ARCHITECT,
P.W. REGION, AURANGABAD**



DEVELOPED BY :
MOHAMMAD HARES SIDDIQUI
PRINCIPAL ARCHITECT

MHS DESIGN BUREAU LLP

FIRST FLOOR

BUILT UP AREA = 6586.83 SQ M

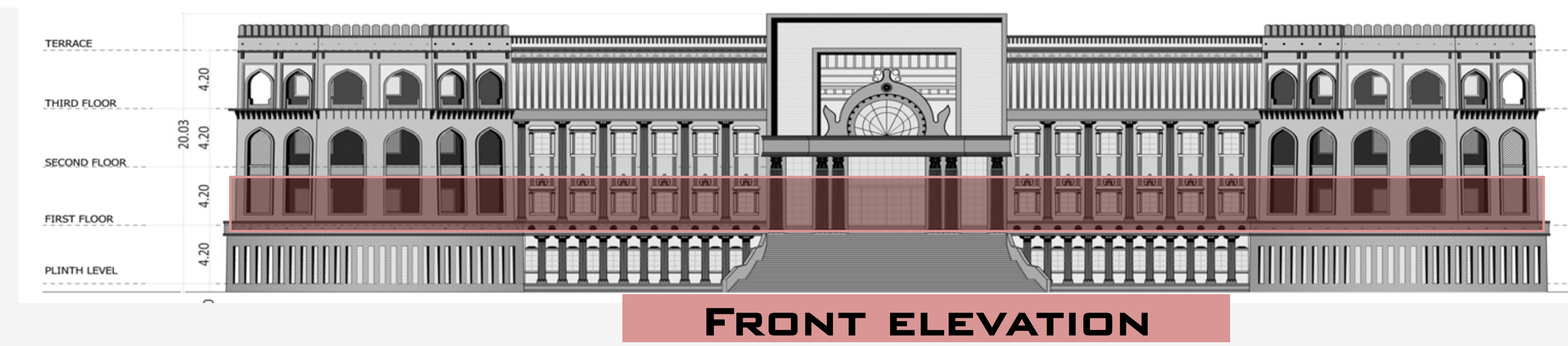
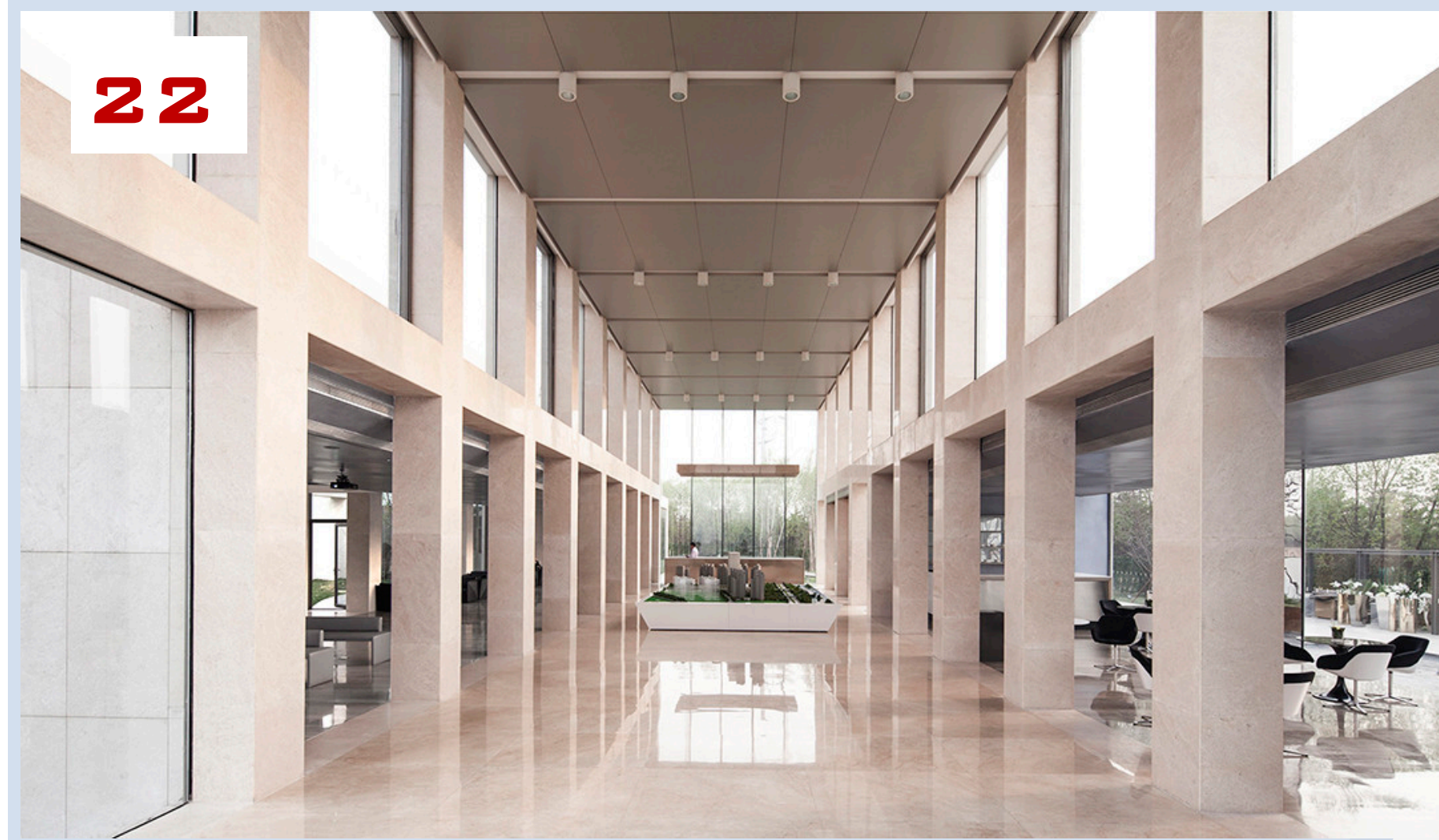
(EXCLUDING THE DUCTS, SHAFTS & ELEVATIONAL PROJECTIONS)

WING B

- 14. MAHSUL SHAKHA
- 15. GRUHA SHAKHA
- 16. VIDHI SHAKHA
- 17. NIYOJAN SHAKHA
- 18. PUBLIC WAITING AREA
- 19. PUBLIC REST ROOMS
- 20. NAGARPALIKA SHAKHA
- 21. STAFF RESTROOMS
- 22. DOUBLE HIEGHT ENTRANCE FOYER

LEGEND

-  OFFICES
-  CORRIDORS AND PASSAGES
-  CHOWKS/ COURTYARDS
-  SERVICE CORE
-  LAVATORIES



FRONT ELEVATION



WING A

1 COLLECTOR'S OFFICE

- A. COLLECTOR'S CHAMBER WITH ANTE ROOM
- B. MEETING ROOM
- C. VIDEO CONFERENCE ROOM
- D. PUBLIC WAITING AREA
- E. SUPPORTING OFFICE STAFF AND STORE
- F. WAITING AREA FOR DIGNITARIES
- G. MEETING HALL FOR 45 PEOPLE



2. D.P.D.C HALL - CAPACITY 200 PEOPLE

- H. WAITING LOUNGE FOR DIGNITARIES ON THE DAIS
- I. PANTRY FOR MEETING HALL AND LOUNGE ROOM



3. LIFT LOBBY

4. R.D.C's OFFICE



5. VISITOR'S REST ROOMS

- 6. COMMON STORE
- 7. SERVER ROOM
- 8. WAITING AREA FOR DIGNITARIES
- 9. COMMON PANTRY
- 10. STAFF REST ROOMS

CONNECTING CIRCULATORY SPACE

- 11. CENTRAL LIFT LOBBY
- 12. ESCALATORS
- 13. DOUBLE HEIGHT ENTRANCE FOYER

SECOND FLOOR


BUILT UP AREA = 5393.28 SQ M

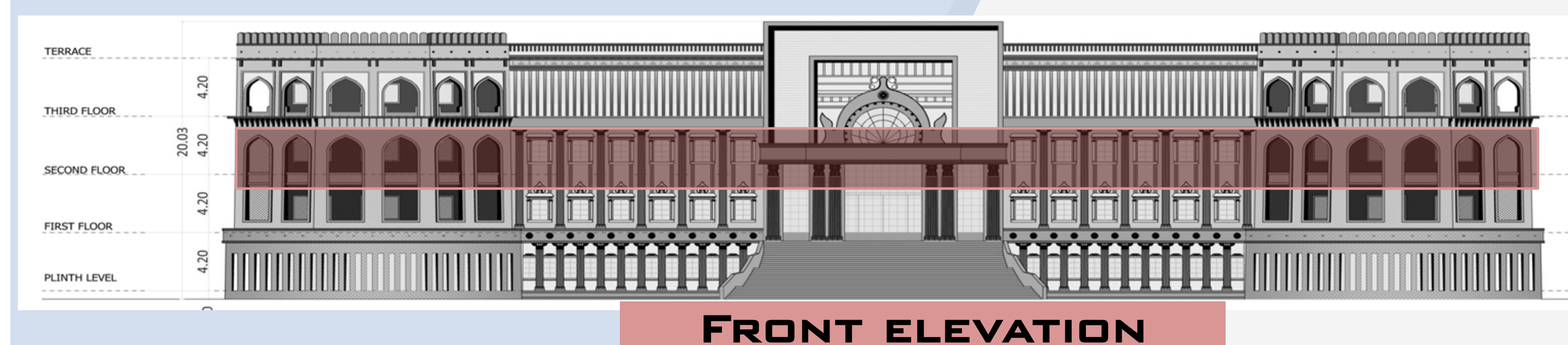
(EXCLUDING THE DUCTS, SHAFTS & ELEVATIONAL PROJECTIONS)

WING B

- 14. PURAVTHA SHAKHA
- 15. AKRUSHIK SHAKHA
- 16. NIVADNUK SHAKHA
- 17. VISHESH BHUSAMPADAN/ BHUSAMPADAN JA. PRA. SHAKHA/ BHUSAMPADAN SAMANVAY SHAKHA/ BHUSUDHAR SHAKHA
- 18. PUBLIC REST ROOMS
- 19. RAJYA SHISHTACHAR
- 20. PUBLIC WAITING AREA
- 21. ASTHAPANA
- 22. STAFF RESTROOMS

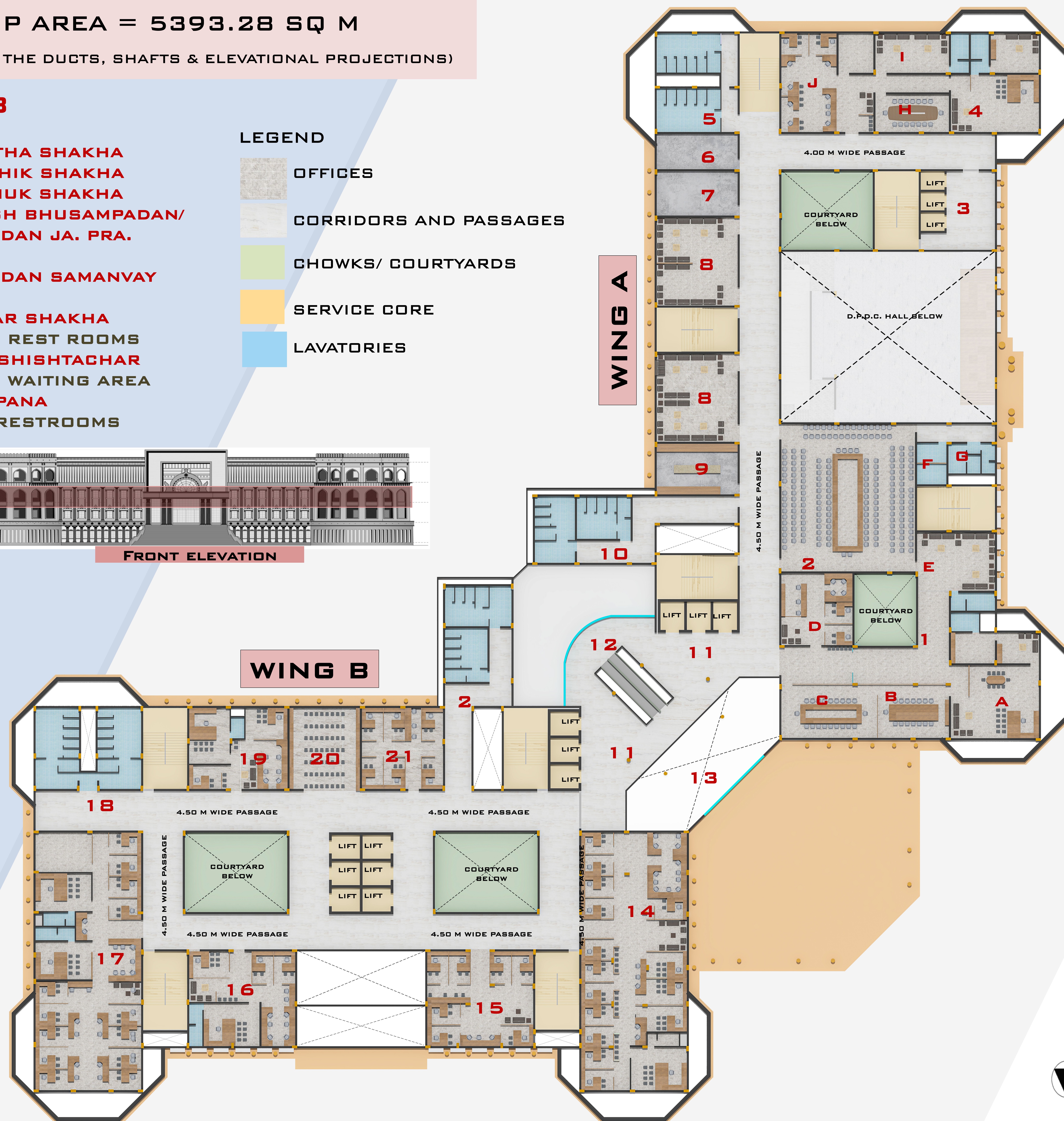
LEGEND

-  OFFICES
-  CORRIDORS AND PASSAGES
-  CHOWKS/ COURTYARDS
-  SERVICE CORE
-  LAVATORIES



WING B

WING A



WING A

1. C.M.'S OFFICE

- A. C.M.'S CHAMBER WITH ANTE ROOM
- B. VIDEO CONFERENCE
- C. MEETING ROOM
- D. SUPPORTING OFFICE STAFF AND STORE
- E. WAITING AREA FOR DIGNITARIES



2. CABINET MEETING HALL - CAPACITY - 200 PEOPLE

- F. SERVER ROOM
- G. REST ROOMS FOR DIGNITARIES



3. LIFT LOBBY

4. DY. C.M.'S OFFICE

- H. VIDEO CONF/ MEETING ROOM
- I. WAITING AREA
- J. SUPPORTING OFFICE STAFF AND STORE



- 5. VISITOR'S REST ROOMS
- 6. COMMON STORE
- 7. SERVER ROOM
- 8. WAITING AREA FOR DIGNITARIES
- 9. COMMON PANTRY
- 10. STAFF REST ROOMS

CONNECTING CIRCULATORY SPACE

- 11. CENTRAL LIFT LOBBY
- 12. ESCALATORS
- 13. DOUBLE HEIGHT ENTRANCE FOYER

THIRD FLOOR

BUILT UP AREA = 6131.77 SQ M

(EXCLUDING THE DUCTS, SHAFTS & ELEVATIONAL PROJECTIONS)

WING B

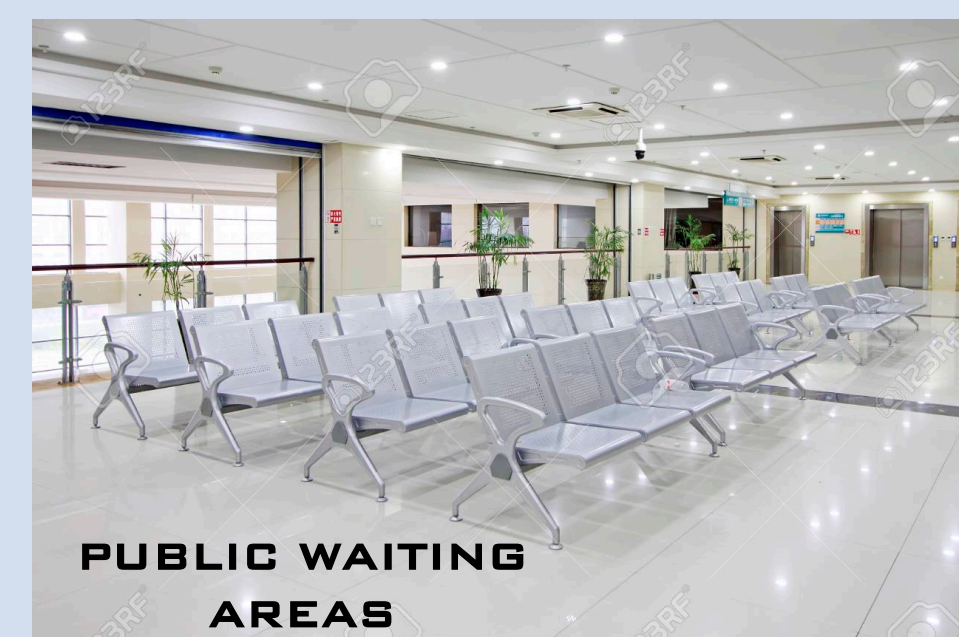
14. SAMANYA PRASHASANA
15. GAUN KHANIJ SHAKHA
16. KARMANUK SHAKHA
17. RO HA YO
18. PUNARVASAN SHAKHA
19. PUBLIC REST ROOMS
20. JILHA SUCHANA VIDYAN KARYALAYA
21. D.I.T. MAHITI TANTRADNYAN SHAKHA
22. STAFF REST ROOMS
23. PUBLIC WAITING AREA

LEGEND

-  OFFICES
-  CORRIDORS AND PASSAGES
-  CHOWKS/ COURTYARDS
-  SERVICE CORE
-  LAVATORIES



FRONT ELEVATION



WING A

- 1.C.S.'S CABINS AND SUPPORTING STAFF
- 2.C.S.'S CABINS AND SUPPORTING STAFF
3. LIFT LOBBY
4. C.S.'S CABINS AND SUPPORTING STAFF



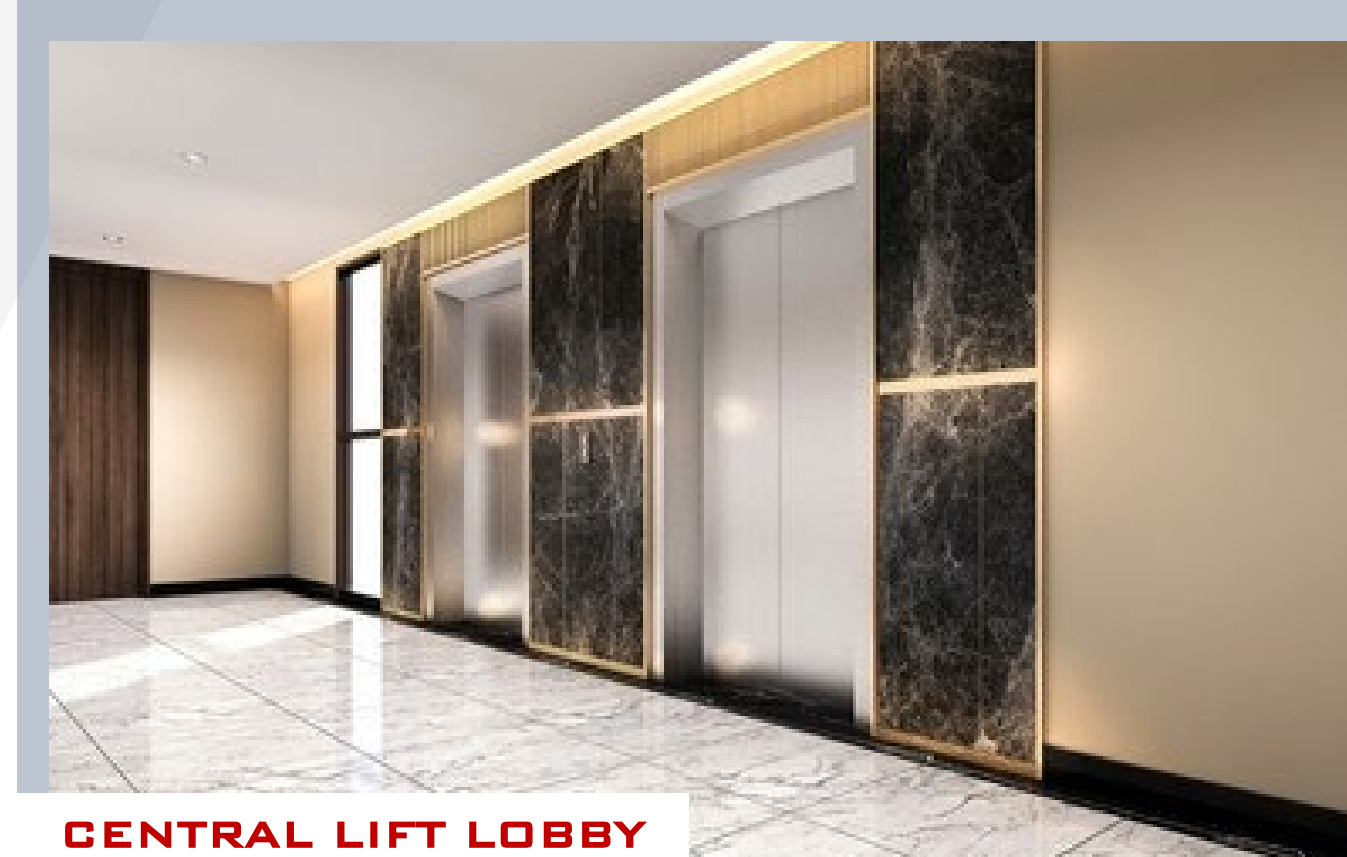
A. VIDEO CONFERENCE/ MEETING ROOM



5. VISITOR'S REST ROOMS
6. COMMON STORE
7. SERVER ROOM
8. C.S.'S CABINS AND SUPPORTING STAFF
9. COMMON PANTRY
10. STAFF REST ROOMS

CONNECTING CIRCULATORY SPACE

11. CENTRAL LIFT LOBBY
12. ESCALATORS
13. DOUBLE HEIGHT ENTRANCE FOYER



PROPOSED NEW COLLECTOR OFFICE BUILDING, IN THE PREMISES OF
LABOUR COLONY, CHATTRAPATI SAMBHAJI NAGAR (AURANGABAD)

7

SMT. M. S. KUMBHARE
DY. CHIEF ARCHITECT

OFFICE OF THE DY. CHIEF ARCHTIECT,
P.W. REGION, AURANGABAD

DEVELOPED BY :
MOHAMMAD HARES SIDDIQUI
PRINCIPAL ARCHITECT
MHS DESIGN BUREAU LLP

ELEVATIONS AND INSPIRATION FROM THE HERITAGE

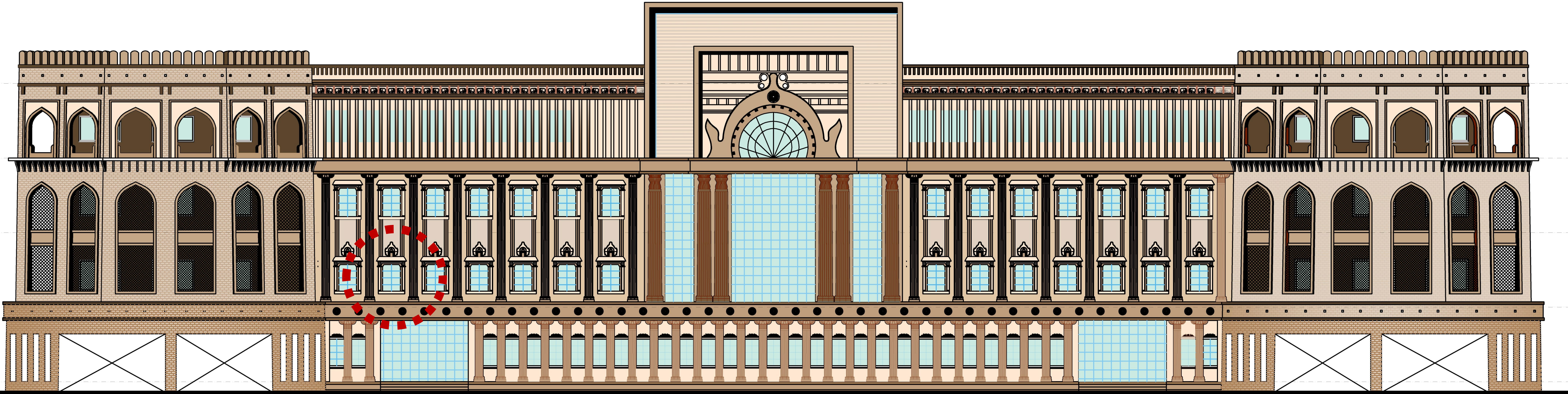


HINDU TEMPLE ARCHITECTURE – KALIAS TEMPLE

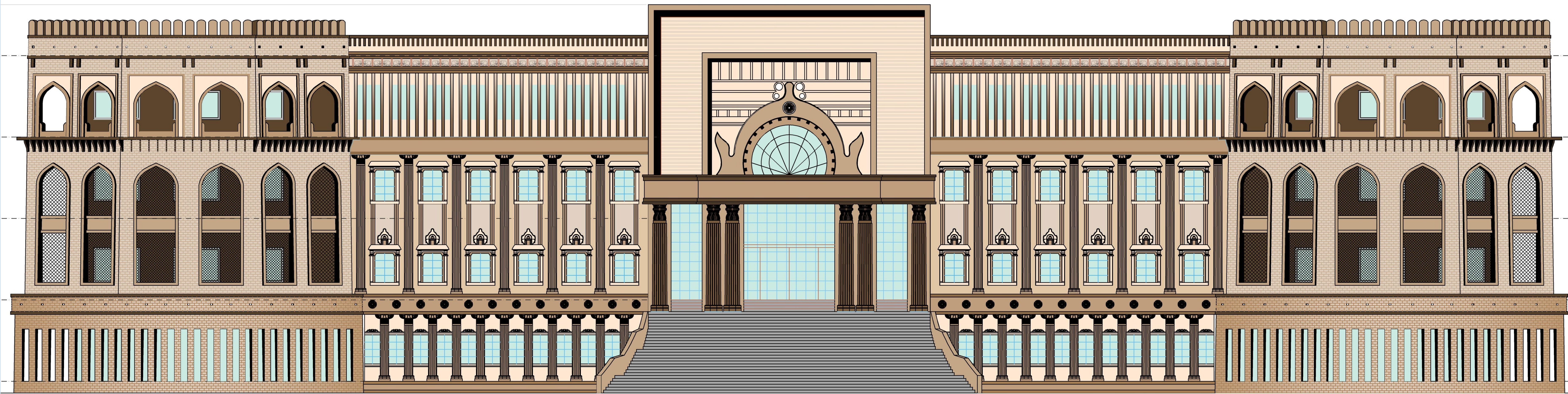


THE TORANA FRAMING AROUND THE WINDOWS
AN ARCHITECTURAL SYMBOL OF A RITE OF
PASSAGE OR LIMINALITY

THE ELEPHANT MOTIFS ON THE FRIEZE

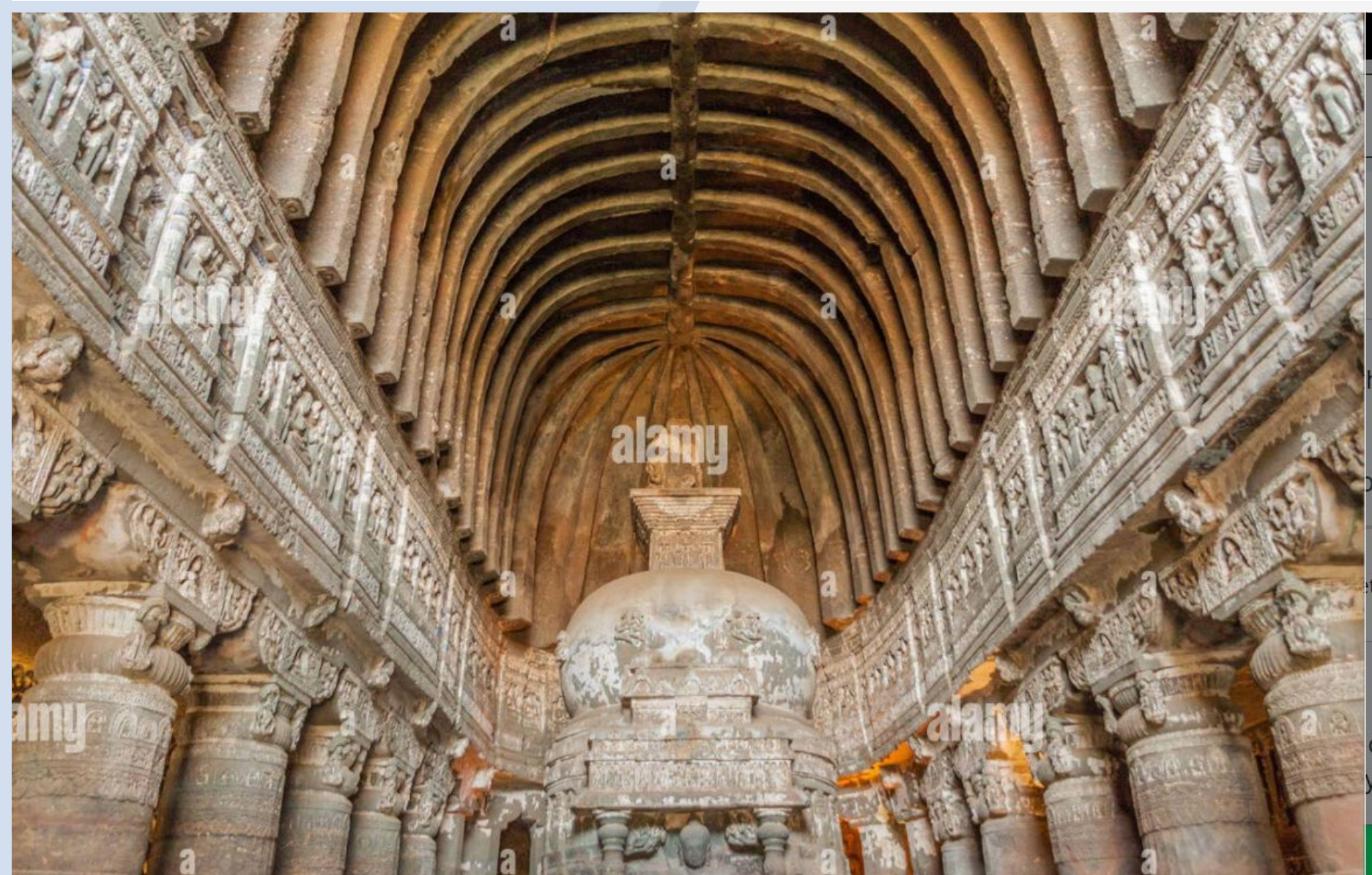


WEST ELEVATION (WING A)



FRONT ELEVATION (WING B)

BUDDHIST ARCHITECTURE – ELLORA CAVES (CAVE NO. 19 AND CAVE NO. 26)



THE RIBBED PATTERN IN THE INTERIORS
OF ROCK CUT CAVE NO. 19

RIBS ON THE OUTER FAÇADE OF THE
ELEVATIONS AT THE THIRD FLOOR
EXTERIORS ACT ALSO AS A SUN SHADING
DEVICE



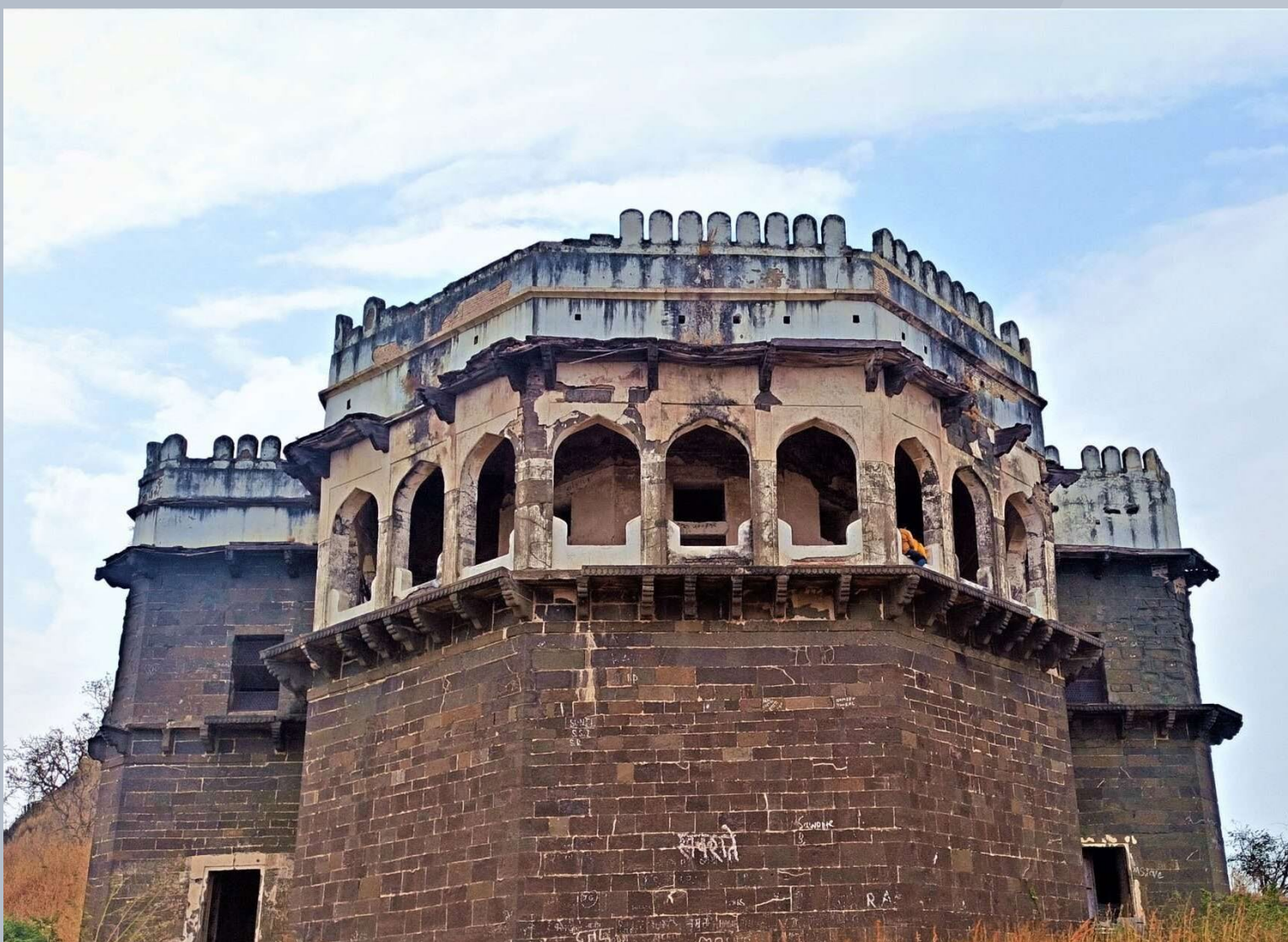
THE ENTRANCE OF THE BUDILDING
DRAWS INSPIRATION FROM THE
HIGHLY ORNATED FRONT FAÇADE OF
THE CAVE NO 19. WHICH DENOTES
A WELCOMING GATEWAY



DIFFERENT COLUMN SHAPES
AND STYLES USED IN THE
ELEVATION TO GIVE AN
APPEARANCE OF COLONNADE
STRUCTURE



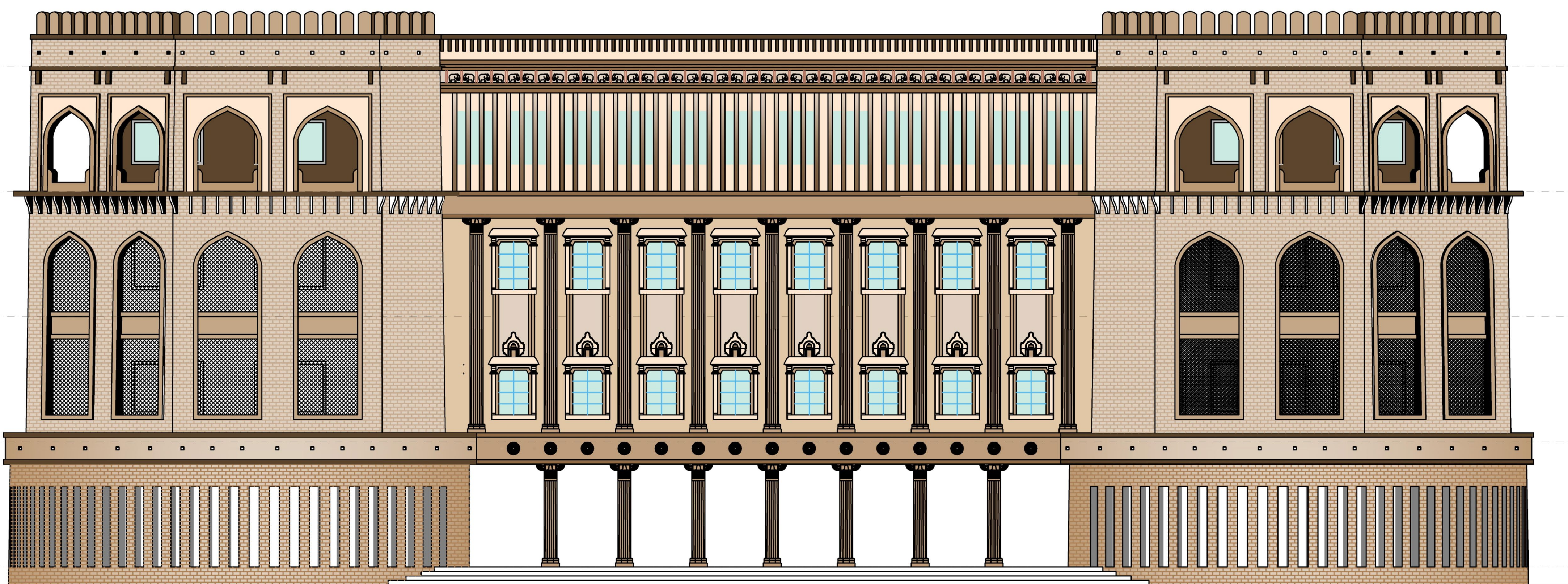
ISLAMIC ARCHITECTURE-
DEVGIRI/ DAULTABAD FORT



THE ARCHES IN THE
CAVITY WALL
THE ARCH IS A SYMBOL
USED TO ELEVATE THE
SPIRIT AND MIND
TOWARDS HIGHER IDEALS
SIMILAR TO GOOD
GOVERNANCE WHICH
CONTRIBUTES TO
ELEVATING THE HOLISTIC
ADMINISTRATIVE
STRUCTURE OF THE CITY

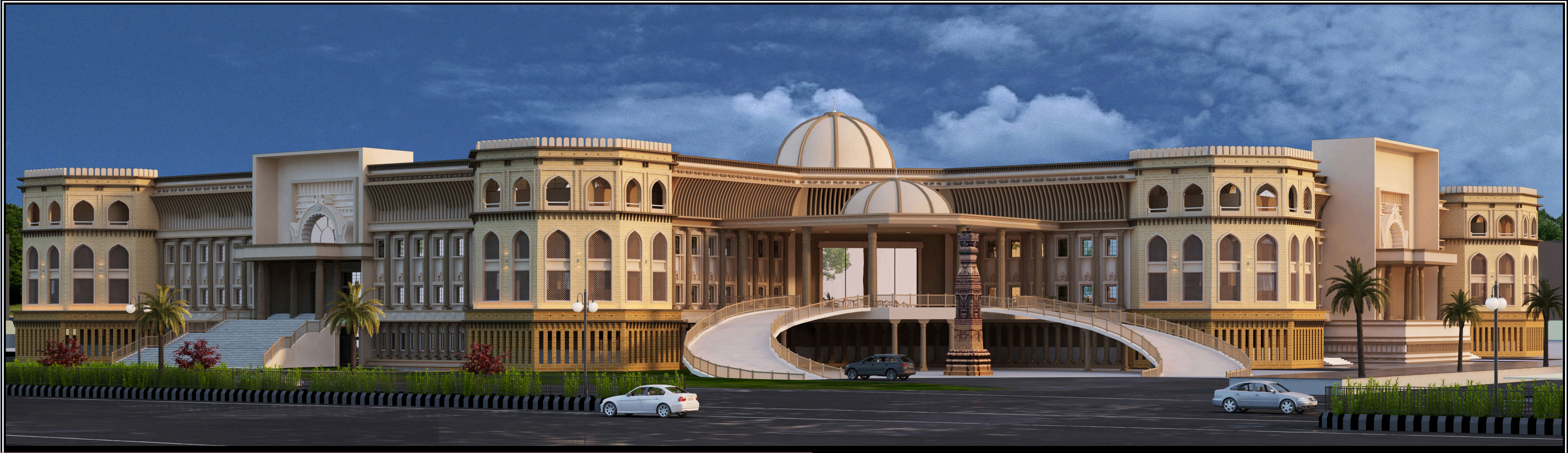


THE JALI PATTERN
TO COVER THE
OPENING IN THE
ARCHES



EAST ELEVATION (WING A)

PERSPECTIVE VIEWS



VIEW FROM THE DIGNITARIES ENTRY TO THE SITE



VIEW OF WING A FROM THE PUBLIC ENTRY TO THE SITE

THANK YOU

**OFFICE OF THE DY. CHIEF ARCHITECT
AURANGABAD.**

**SMT. M. S. KUMBHARE
DY. CHIEF ARCHITECT**

Project Management Consultant (PMC)



MOHAMMAD HARES SIDDIQUI
PRINCIPAL ARCHITECT
Mob:- 9823264787

ISO 9001-2015 | ISO 14001
5&6, Gr. Floor, Samreen Palace, Dr Rafiq Zakaria Marg,
Delhi gate, **Aurangabad**. 431001 M.S. India
Contact: +91(240)2324787, +91(240)2364787
Email: info@mhsdesignbureau.com
Web: www.mhsdesignbureau.com
A2-802, B.E.C. Kondhwa **Pune** 411048 M.S. India